



Museum Archives

Marine Dr

Charlie Don't Surf

Sam's Waterfront Cafe

Shinjuku Japanese Restaurant White Rock

Uli's

Marine Dr

Dolce Gelato

Marine Dr

White Rock Promenade

Marine Dr

Memorial Park

White Rock Promenade

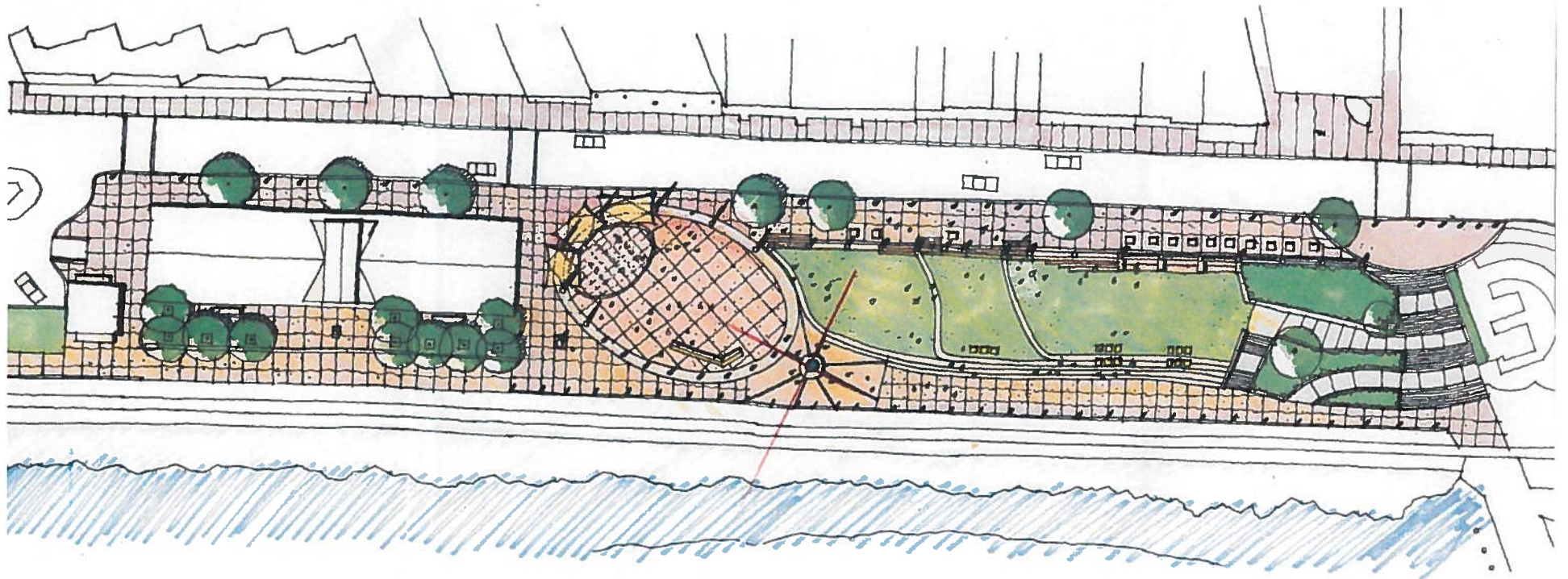
White Rock Pier Walk

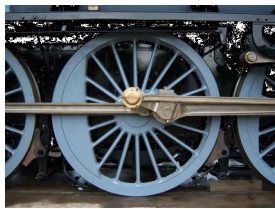
The REFINED PEARL

The Station

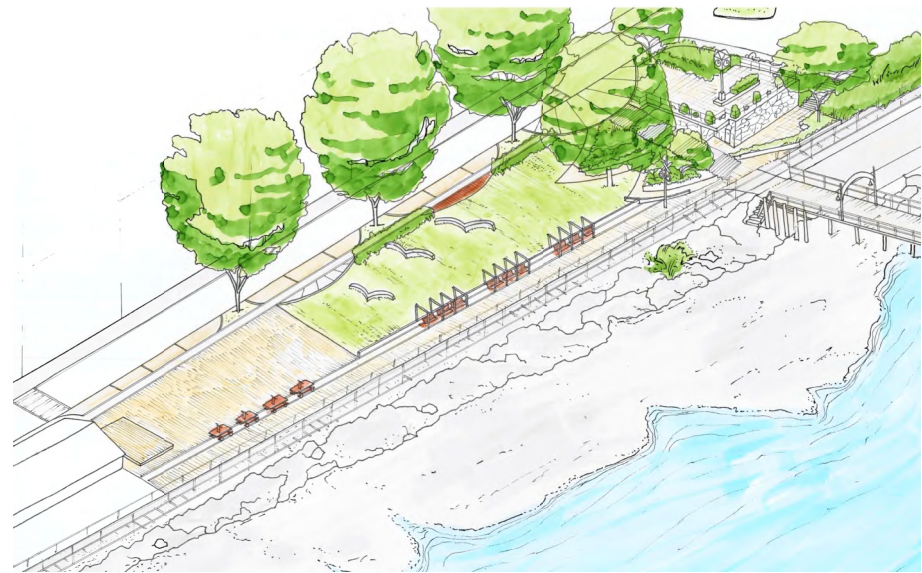
The Pearl

The Park/ The Promenade

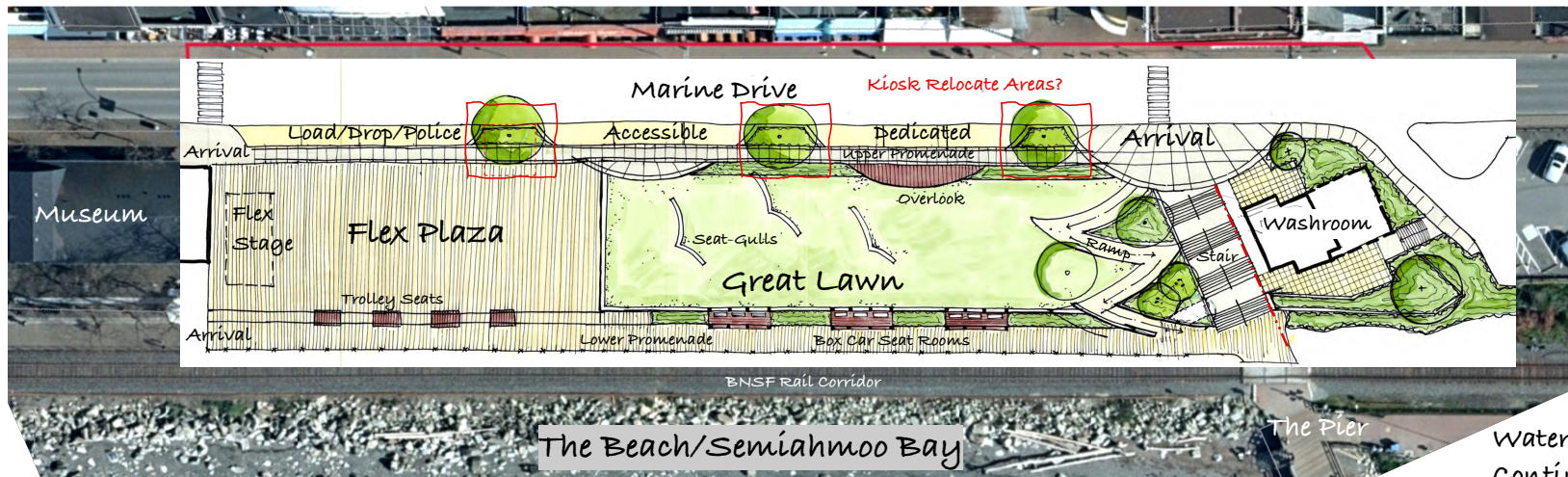




Character/Feel

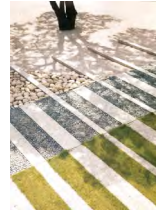
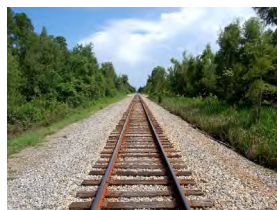


Axonometric of Overall Park Space



East Parking Lot

Waterfront Walk Continues

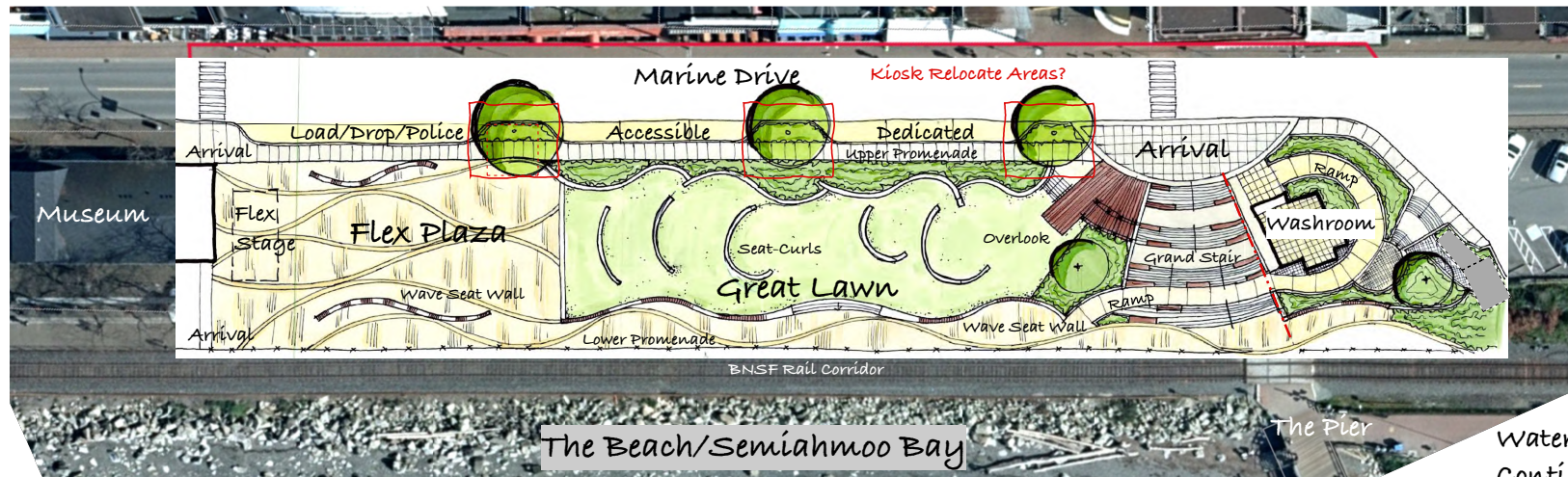




Character/Feel

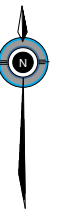
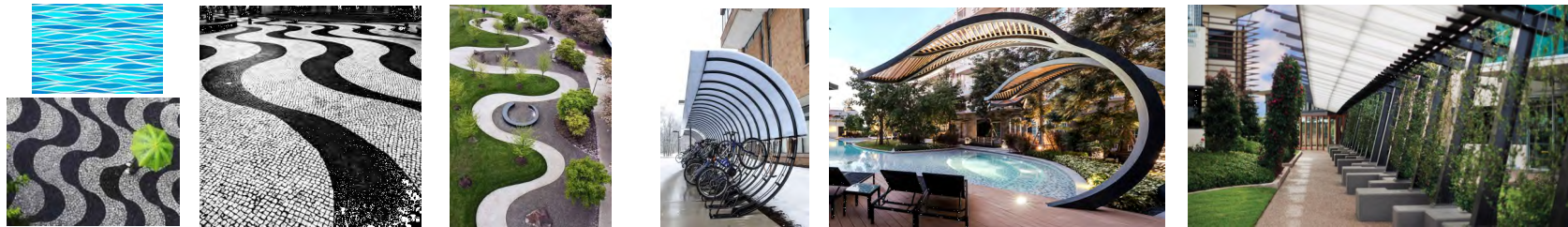


Axonometric of Overall Park Space



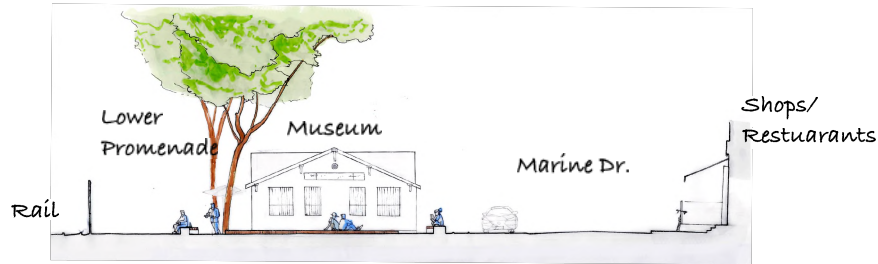
East Parking Lot

Waterfront Walk Continues



Sept. 14th, 2016

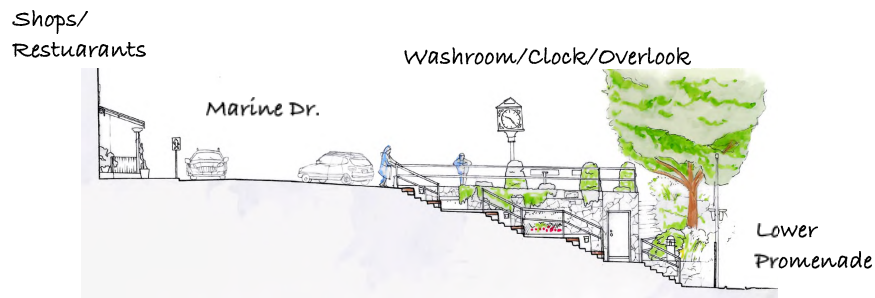
Typical Sections



Cross-Section thru Plaza(West End)

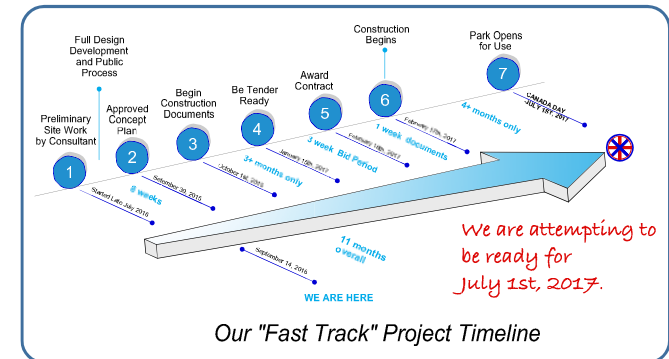


Cross-Section thru Lawn(Mid-Park)



Cross-Section thru Stairs(East End)

Preliminary Timeline



Help Us Define the Program

The Program we have identified so far with Staff and Stakeholders:

1. Flexible plaza space.
2. Amphitheatre seating.
3. Terraced Lawn and more of it!
4. On Site Storage (for Parks use)
5. An Upper Promenade/walkway.
6. Loading and drop-off parking on Marine Dr. for service/events etc.
7. Wider Lower promenade.
8. A new "Grander" stair-perhaps?
9. Tourism Kiosk-moves or stays?
10. New/Expanded washrooms...a MUST!
11. Lighting and power for all planned activities and festival/event needs.
12. Other Parks infrastructure elements-of course. (drainage/lighting/irrigation).
13. All apropos site furniture elements-drinking ftn., footwash stations, benches, trash, bike racks etc.
14. More functional/safer paving throughout.
15. Wi-fi connectivity.
16. Seating
17. Shade Elements
18. Public Art...and MORE!! Help Us expand the Listing on the Feedback Form!

Pier Washrooms Potential Upgrades

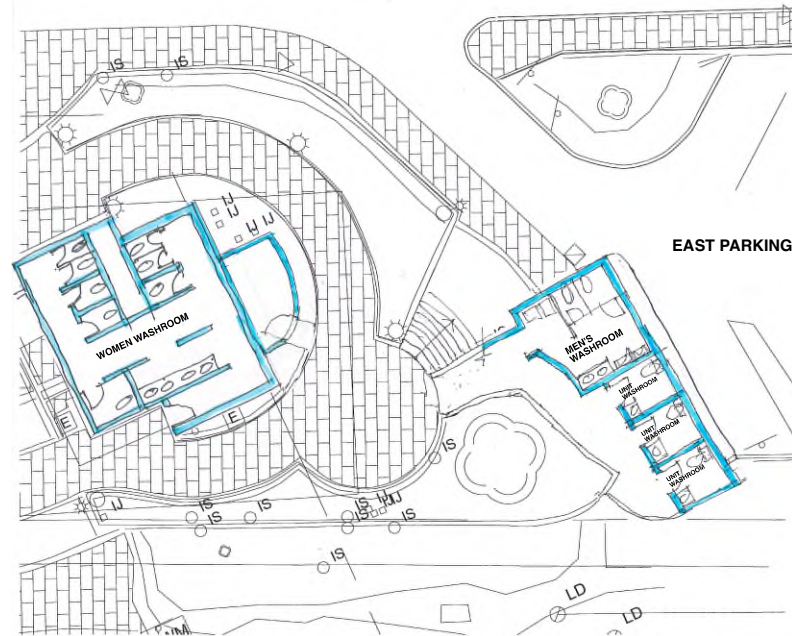
Current Washrooms & Deficiencies

- Grossly inadequate facilities. Especially women's washrooms.
- Lacking proper Unit Disabled Washroom
- Dated facilities and in need of refreshing
- Internal layout and accessibilities not in conformance with current standards and code

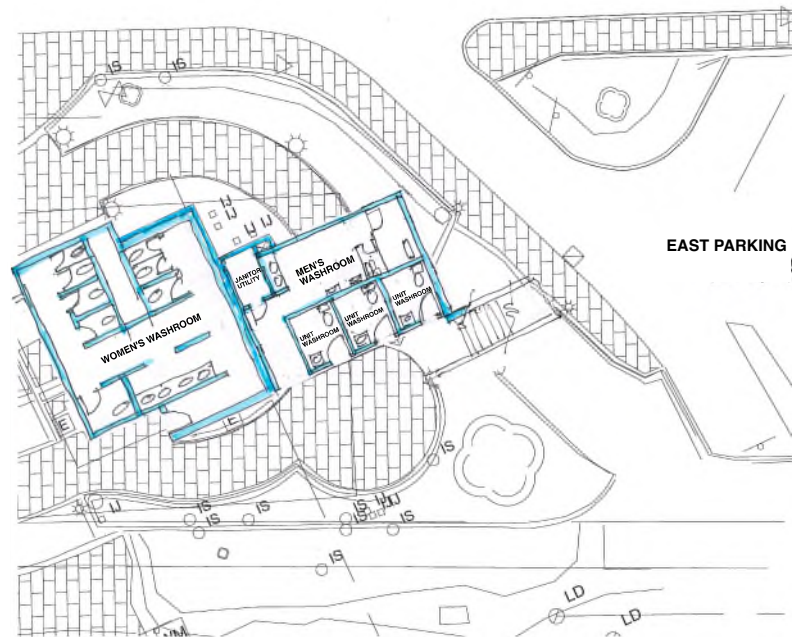


Possible Approach & Programme for Improvements

- **Number of Female toilets:** since no specific codes to refer to, the current consensus is to increase the number of female toilets from the current 3 up to a total of 8. This would equate to a building code capacity of up to 200 females, in relation to assembly occupancies.
- **Numbers of male toilets/urinals:** currently there are 4 toilet/urinals. At this time there does not seem to be a lack of these. In fact the current number of toilet/urinals for a capacity of 200 males in an assembly occupancy in relation to the building code is 4. So the current allotment of 4 toilet/urinals will be maintained.
- **Unit washrooms for Disabled, Family or LGBT:** none currently exist, so it is proposed to provide 3 identical unit washrooms, suitably laid out and all identified for use as Disabled, Family or LGBT.
- **Design Standards:** it is proposed that in designing the washroom additions and renovations the updates will bring the facilities to modern standards and concentrate on adequate accessibility along with high quality specifications for
- maintenance.
- **Optional Washroom Layouts:** Two optional layouts have been developed.



OPTION 1



OPTION 2