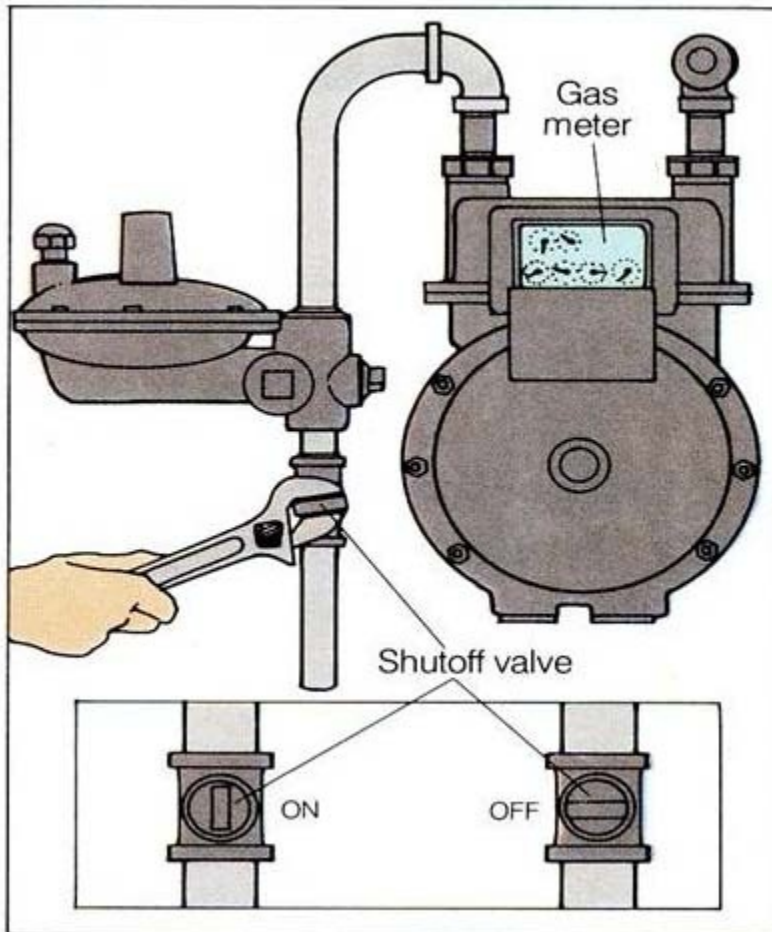


How to Turn off Your Natural Gas

GAS SHUTOFF VALVE



1. Knowing the location of your main shutoff valve will help you turn off the gas supply to your entire home quickly. Normally you won't need to shut off a gas meter unless there is a strong odor or sound of escaping gas or if there is major damage to the building. If your gas is turned off, there may be a considerable delay before the gas company can turn your service on, but don't turn it on yourself. Leave it off until service can be re-established safely by a gas company service person or other qualified professional. Know where your main shut-off valve is located. Keep a wrench handy to turn off the gas.

2. Most gas appliances have a valve that lets you turn off the gas to that appliance only. Know which of your home's appliances run on natural gas, and where their shutoff valves are located. In most cases, turning off the gas at the appliance's shutoff valve will suffice.

3. Many older gas appliances have a small, continuously burning gas flame - the pilot light - that ignites the main burner. Newer models have electric igniters. Know which, if any, of your appliances have a pilot light. Keep the manufacturer's relighting instructions within easy reach.

4. Keep a flashlight handy to investigate minor gas odors. Check pilot lights to make sure they are lit. Never use matches or candles, and never turn any electric switches on or off if you smell gas. Always wait five minutes to let gas disperse before trying to relight your appliance. If the smell (rotten eggs) or sound of escaping gas continues or if you have any doubts, open windows and doors and get everyone out of the building. Call the Fortis BC Gas 24 hour emergency line (1-800-663-9911) or call 911 from the nearest phone away from the gas odor.