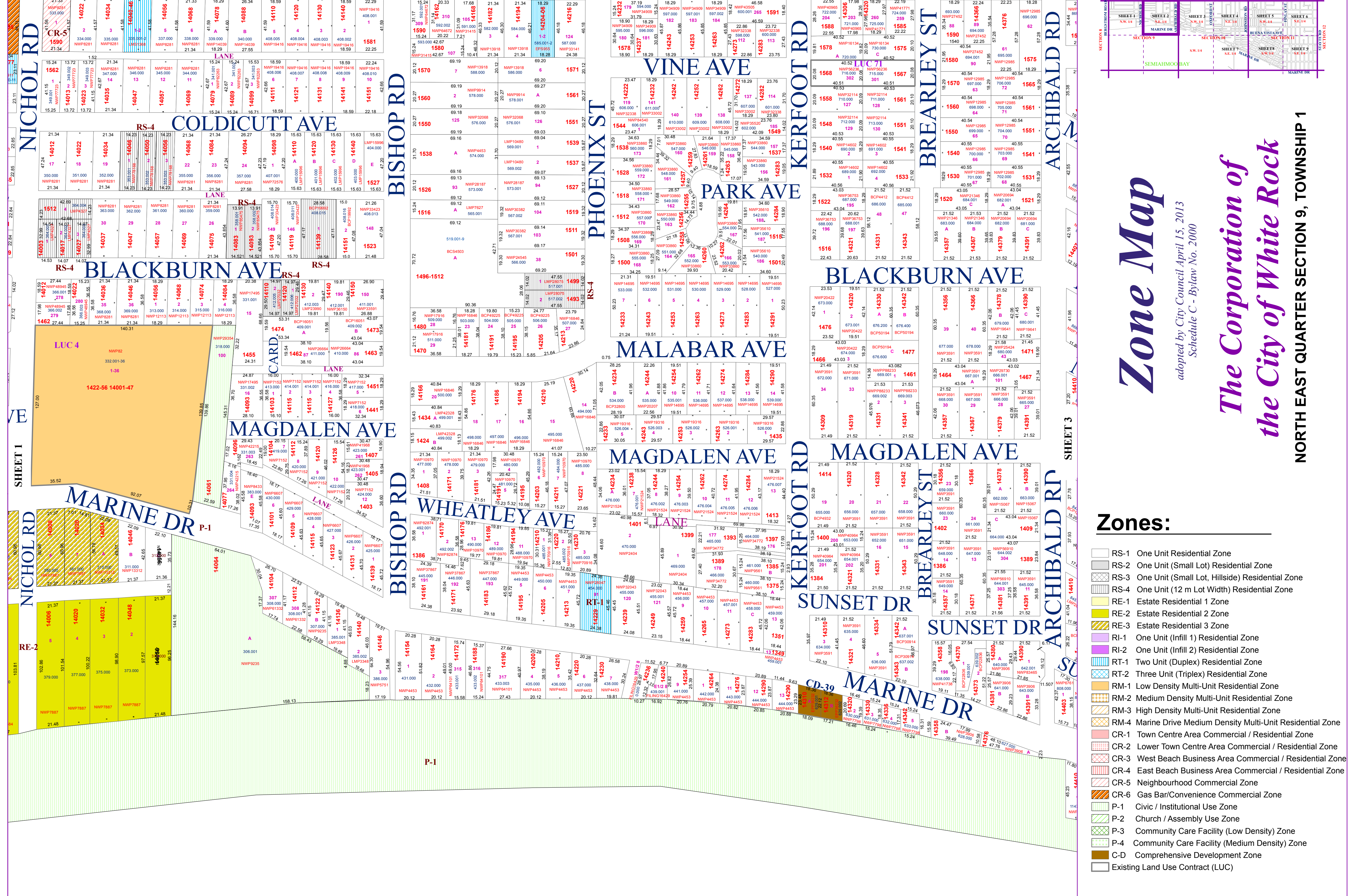
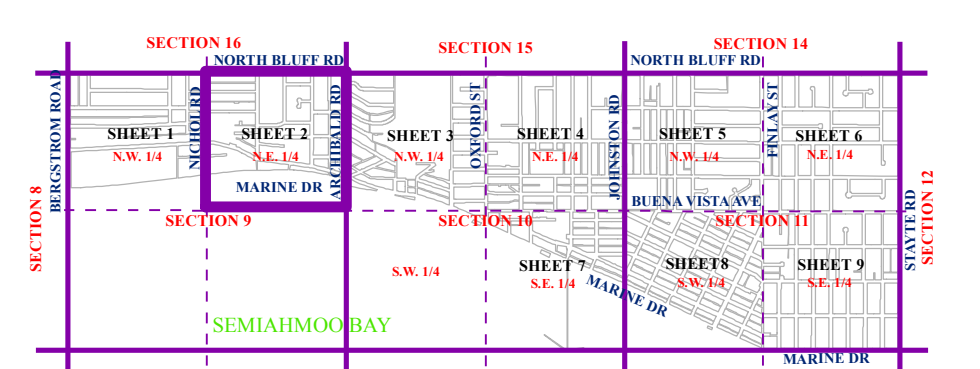
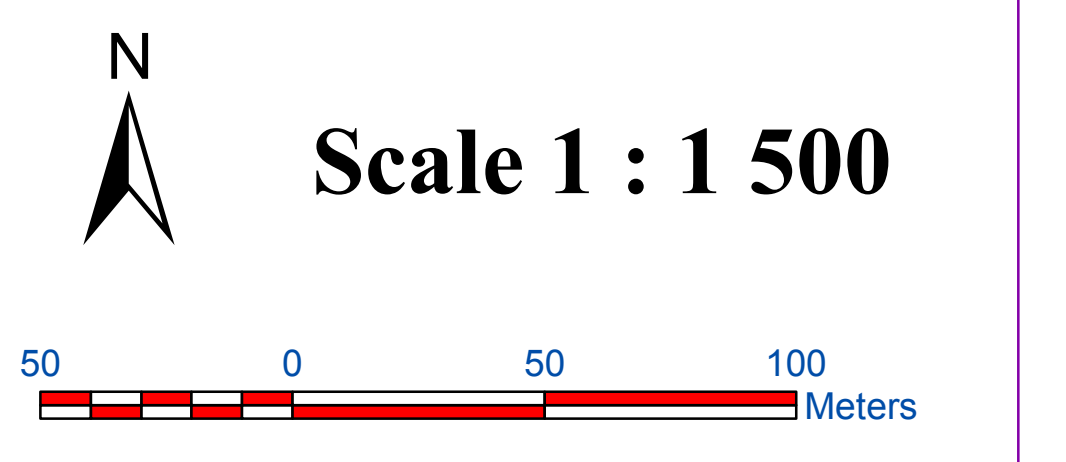


NORTH BLUFF RD

NORTH BLUFF RD



- Zones:**
- RS-1 One Unit Residential Zone
 - RS-2 One Unit (Small Lot) Residential Zone
 - RS-3 One Unit (Small Lot, Hillside) Residential Zone
 - RS-4 One Unit (12 m Lot Width) Residential Zone
 - RE-1 Estate Residential 1 Zone
 - RE-2 Estate Residential 2 Zone
 - RE-3 Estate Residential 3 Zone
 - RI-1 One Unit (Infill 1) Residential Zone
 - RI-2 One Unit (Infill 2) Residential Zone
 - RT-1 Two Unit (Duplex) Residential Zone
 - RT-2 Three Unit (Triplex) Residential Zone
 - RM-1 Low Density Multi-Unit Residential Zone
 - RM-2 Medium Density Multi-Unit Residential Zone
 - RM-3 High Density Multi-Unit Residential Zone
 - RM-4 Marine Drive Medium Density Multi-Unit Residential Zone
 - CR-1 Town Centre Area Commercial / Residential Zone
 - CR-2 Lower Town Centre Area Commercial / Residential Zone
 - CR-3 West Beach Business Area Commercial / Residential Zone
 - CR-4 East Beach Business Area Commercial / Residential Zone
 - CR-5 Neighbourhood Commercial Zone
 - CR-6 Gas Bar/Convenience Commercial Zone
 - P-1 Civic / Institutional Use Zone
 - P-2 Church / Assembly Use Zone
 - P-3 Community Care Facility (Low Density) Zone
 - P-4 Community Care Facility (Medium Density) Zone
 - C-D Comprehensive Development Zone
 - Existing Land Use Contract (LUC)



Zone Map
adopted by City Council April 15, 2013
Schedule C - Bylaw No. 2000
The Corporation of
the City of White Rock
 NORTH EAST QUARTER SECTION 9, TOWNSHIP 1