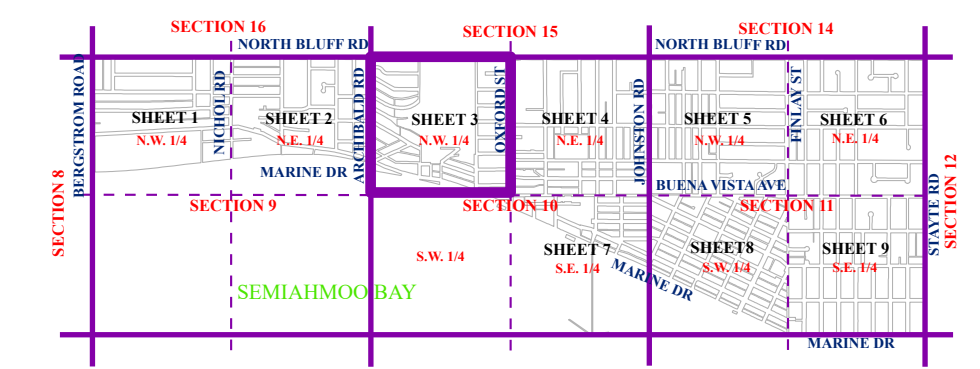
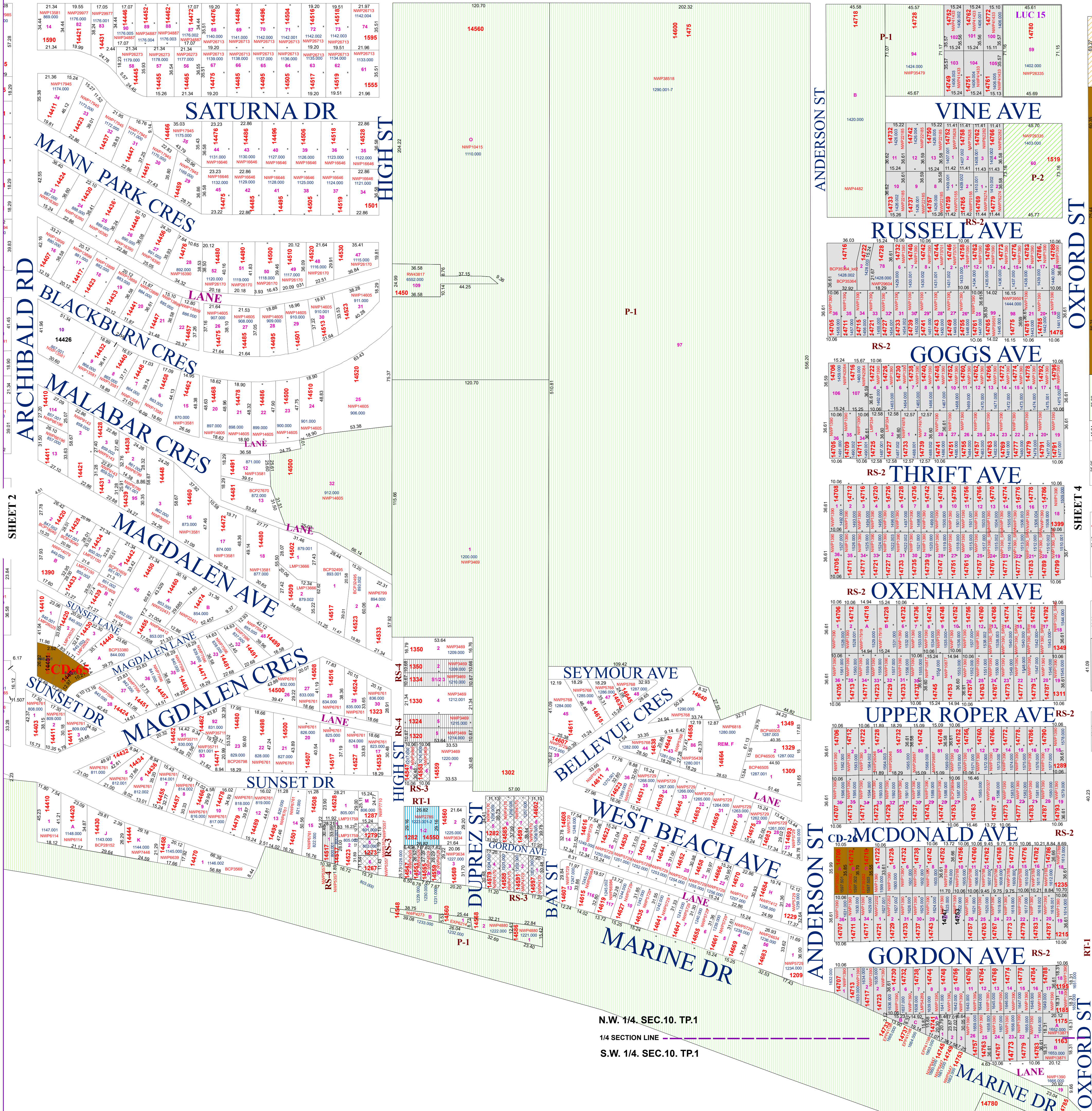


NORTH BLUFF RD

SHEET 3



Zone Map

adopted by City Council April, 15, 2013
Schedule C - Bylaw No. 2000

The Corporation of the City of White Rock

NORTH WEST QUARTER SECTION 10, TOWNSHIP 1

Zones:

- RS-1 One Unit Residential Zone
- RS-2 One Unit (Small Lot) Residential Zone
- RS-3 One Unit (Small Lot, Hillside) Residential Zone
- RS-4 One Unit (12 m Lot Width) Residential Zone
- RE-1 Estate Residential 1 Zone
- RE-2 Estate Residential 2 Zone
- RE-3 Estate Residential 3 Zone
- RI-1 One Unit (Infill 1) Residential Zone
- RI-2 One Unit (Infill 2) Residential Zone
- RT-1 Two Unit (Duplex) Residential Zone
- RT-2 Three Unit (Triplex) Residential Zone
- RM-1 Low Density Multi-Unit Residential Zone
- RM-2 Medium Density Multi-Unit Residential Zone
- RM-3 High Density Multi-Unit Residential Zone
- RM-4 Marine Drive Medium Density Multi-Unit Residential Zone
- CR-1 Town Centre Area Commercial / Residential Zone
- CR-2 Lower Town Centre Area Commercial / Residential Zone
- CR-3 West Beach Business Area Commercial / Residential Zone
- CR-4 East Beach Business Area Commercial / Residential Zone
- CR-5 Neighbourhood Commercial Zone
- CR-6 Gas Bar/Convenience Commercial Zone
- P-1 Civic / Institutional Use Zone
- P-2 Church / Assembly Use Zone
- P-3 Community Care Facility (Low Density) Zone
- P-4 Community Care Facility (Medium Density) Zone
- C-D Comprehensive Development Zone
- Existing Land Use Contract (LUC)



Scale 1 : 1 500



Print Date: Nov 6 2023